

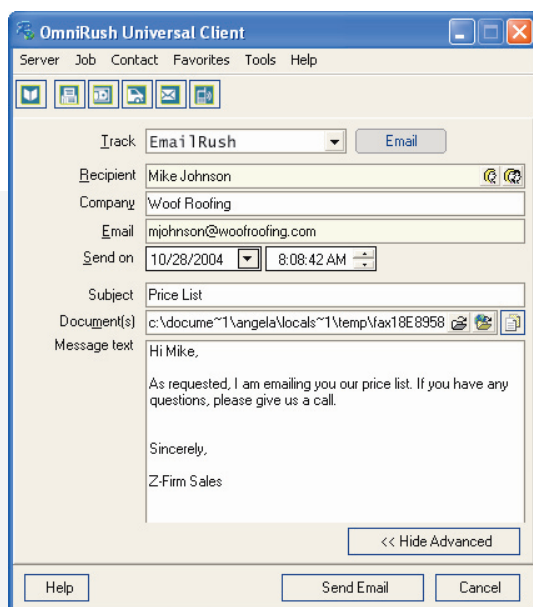


# EmailRush

EmailRush is the easiest way to send HTML emails, nicely formatted with personalized information. Now you can send unlimited emails with personalized attachments. And the best part? It is all logged into the contact system you use every day!

## Features and Benefits:

- Create your marketing pieces in the HTML editor of your choice
- Integrated relay server allows you to send broadcasts of any size
- Attach multiple files, even merge files and convert them to PDF automatically
- Merge information from your database into HTML, even one to many
- All merging done on the server, no time wasted on your machine
- See true status of email in your CRM or database for each contact you send it to
- Bad address detection – EmailRush detects most bad email addresses before they result in a bounce
- Print-to-Email from any Windows application
- Advanced, custom SQL merging
- Use GoldMine, MSCRM, SalesLogix, ACT! 2005 or your database as the email directory



### Out-of-box integration with:

ACT! 2005

GoldMine, including Automated Processes and iGoldMine

Microsoft CRM, including MSCRM workflow

SalesLogix, including the SalesLogix Web Client and Processes

Database Systems: Developers can integrate EmailRush to nearly any system running on Microsoft SQL Server, Oracle, Pervasive, MySQL, and other ADO accessible databases

For more information, visit us at [www.zfirm.com](http://www.zfirm.com), or call (206) 812-RUSH

Copyright ©2005 Z-Firm LLC. All rights reserved. EmailRush is a trademark of Z-Firm LLC.

# EmailRush

## Who uses EmailRush?

- ⌘ Marketing teams use EmailRush for personalized merge marketing.
- ⌘ Insurance and finance firms merge standard forms so the customer receives them 'pre-filled' and ready to sign.
- ⌘ Customer Service teams email merged HTML documents to customers.
- ⌘ Sales and Technical Support reps can send out standard literature with the click of a button.

## Technical Information:

EmailRush runs on the following Microsoft Operating Systems:

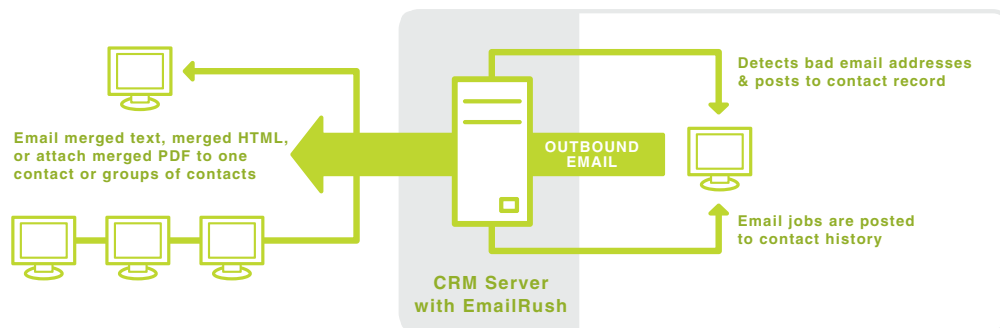
Windows 2000

Windows XP

Windows 2003 Server

EmailRush sends emails using:

- ⌘ Integrated SMTP relay server
- ⌘ External SMTP relay server



## The OmniRush Family

EmailRush is a member of the OmniRush Family. The OmniRush Family includes CashRush, EmailRush, FaxRush, PrintRush, and ShipRush Server. The OmniRush Family of products is a suite of utilities every business can use. From communication to back office functions like shipping and credit card processing, this suite offers the features you need and completely integrates with the system you use. Please visit [www.zfirm.com](http://www.zfirm.com) to learn more about the OmniRush Family of products.

## About Z-Firm

Z-Firm automates and streamlines small businesses with easy, integrated software. Z-Firm has developed award-winning CRM and accounting add-ons for nearly a decade. Used by tens of thousands of users, Z-Firm's software reduces complex processes to a smooth, integrated button.

For more information, visit us at [www.zfirm.com](http://www.zfirm.com), or call (206) 812-RUSH

Copyright ©2005 Z-Firm LLC. All rights reserved. EmailRush is a trademark of Z-Firm LLC.